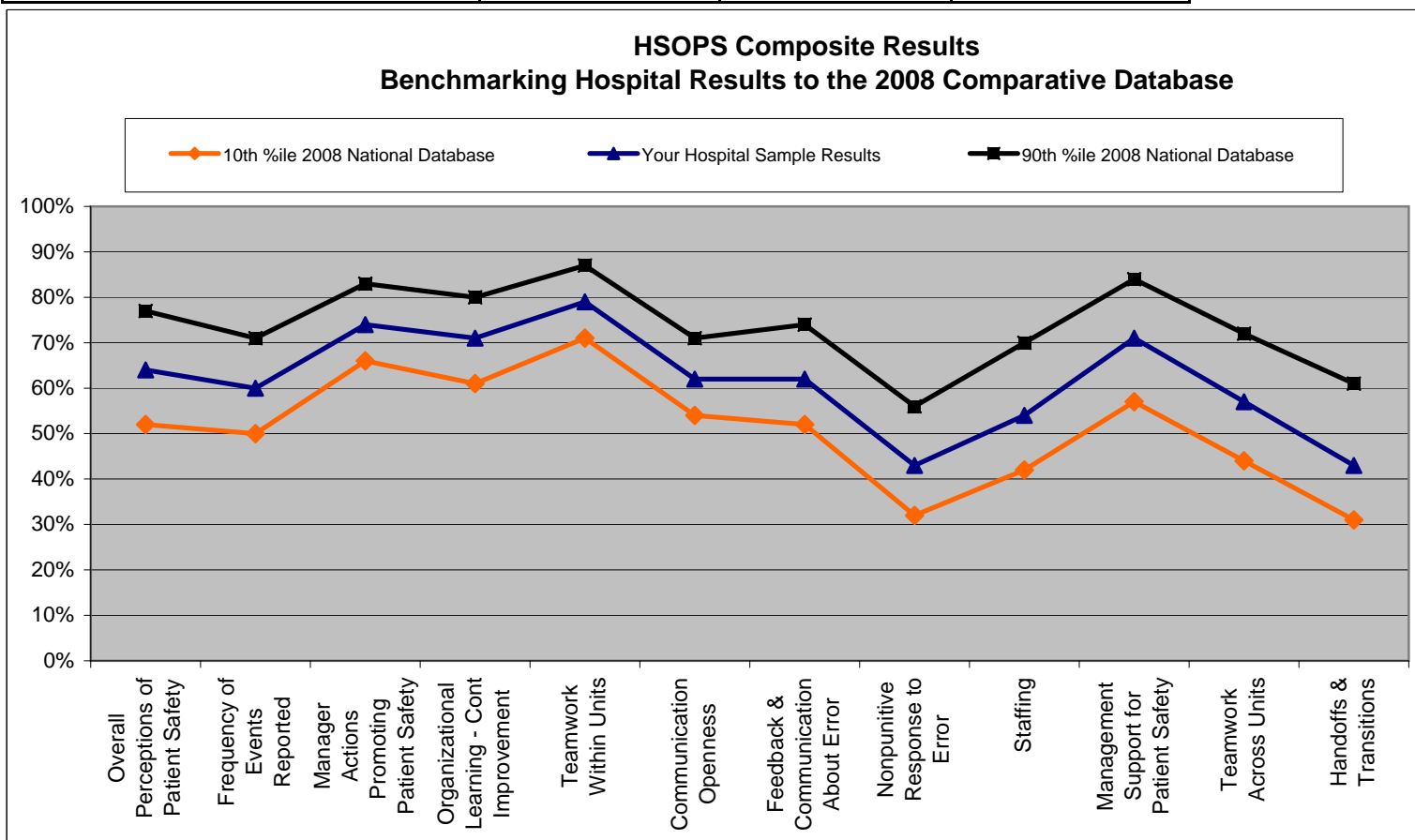


Benchmark Tool to Compare HSOPS Composite Scores to 2008 Comparative Database

Safety Culture Composites	10th %ile 2008 National Database	Your Hospital Sample Results	90th %ile 2008 National Database
Overall Perceptions of Patient Safety	52%	64%	77%
Frequency of Events Reported	50%	60%	71%
Manager Actions Promoting Patient Safety	66%	74%	83%
Organizational Learning - Cont Improvement	61%	71%	80%
Teamwork Within Units	71%	79%	87%
Communication Openness	54%	62%	71%
Feedback & Communication About Error	52%	62%	74%
Nonpunitive Response to Error	32%	43%	56%
Staffing	42%	54%	70%
Management Support for Patient Safety	57%	71%	84%
Teamwork Across Units	44%	57%	72%
Handoffs & Transitions	31%	43%	61%



Instructions: To obtain a graph comparing your composite results to those from the 10th and 90th percentiles of hospitals reporting to the 2008 Comparative Database, click on "Composite Scores for Comparison" on the Main Menu of your results in the Premier Excel Tool. Copy the cells from the column "Your Hospital's Composite Score % of positive responses on this composite" and use the **Paste Special** command to insert the values (or just enter the numbers manually) into the column above labeled "Your Hospital (Sample)." The blue line will then represent your hospital's composite positive results in comparison to the 10th and 90th percentiles of the 519 hospitals (160,176 respondents) reporting to the 2008 Comparative Database. This tool was created at the University of Nebraska Medical Center as part of an AHRQ-funded Partnerships in Implementing Patient Safety Grant (AHRQ Grant 1 U18 HS015822-01). NOTE: This tool was developed in Microsoft Office Excel 2003 and is available at www.unmc.edu/rural/patient-safety.

For further information contact: Katherine Jones, PhD, PT
 e-mail kjonesj@unmc.edu
 phone 402-559-8913

Anne Skinner, RHIA
 e-mail askinner@unmc.edu
 phone 402-559-8221