

Resident and Patient Safety Learning Collaborative

Welcome and Introduction



Today's Agenda

- Welcome and Introductions
- Setting the Stage for Patient and Resident Safety in Minnesota
- Breakout sessions
- Using teamwork
- Team goal-setting



Goals of the Collaborative

- Provide a forum for nursing home and hospital staff to learn, network, and achieve improvement by working together collaboratively
- Improve the quality and safety of care provided to residents and patients



3

To Support Collaboration:

- Listen to others
- Be respectful of things you hear
- Be open to learning new things (have a “learner’s mind”)
- Contribute and share
- Ask questions
- Avoid side conversations
- All intended to create a non-threatening, non-competitive environment



4

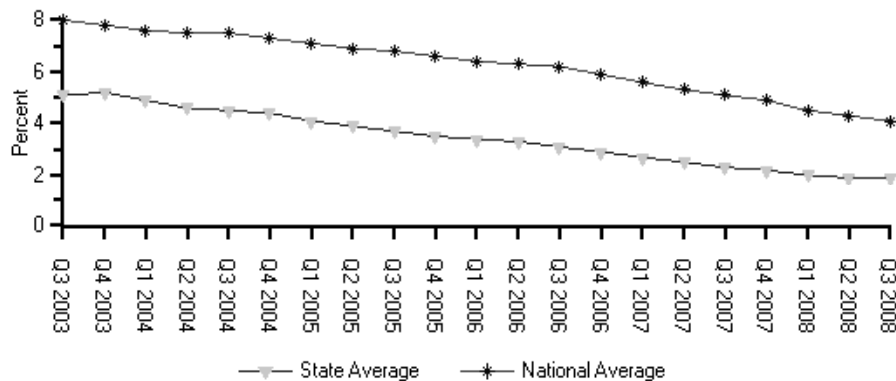
Collaborative Participants

- 21 Nursing Homes
 - Focus on reducing pressure ulcers and physical restraints
- 13 Hospitals
 - 2 Focus on reducing incidence of hospital acquired MRSA
 - 3 Focus on reducing pressure Ulcers
 - 9 Surgical Care Improvement Project



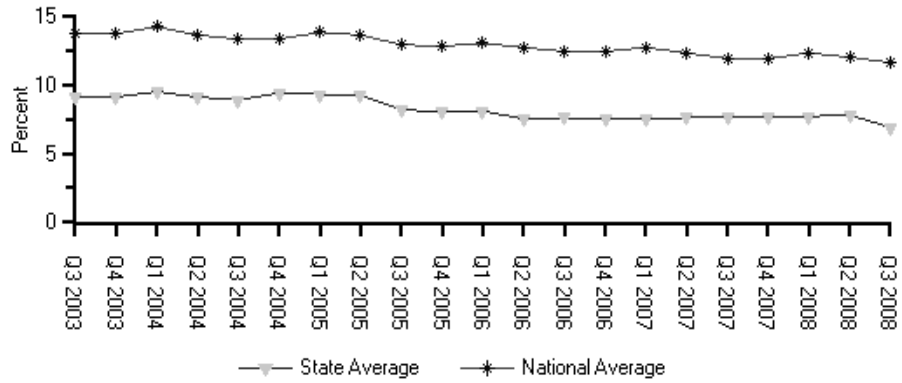
Physical Restraints

Percent of Residents Who Were Physically Restrained
Stratis Health



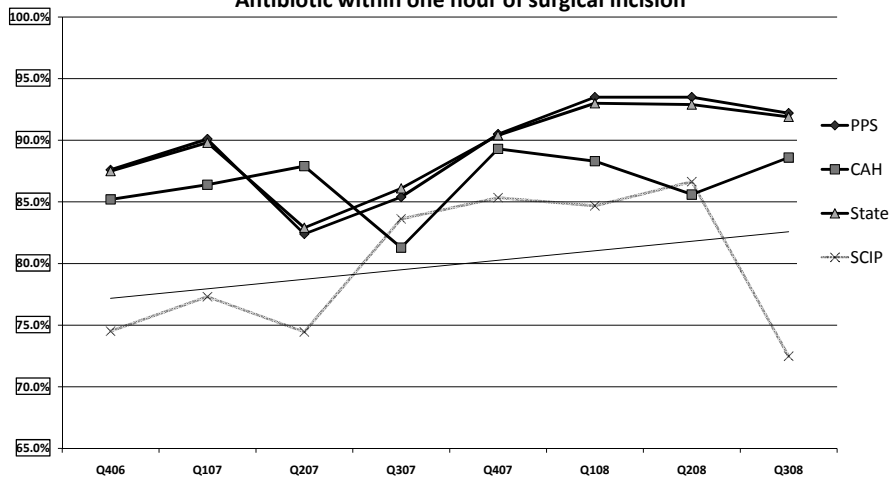
Pressure Sores

Percent of High-Risk Residents Who Have Pressure Sores
Stratis Health



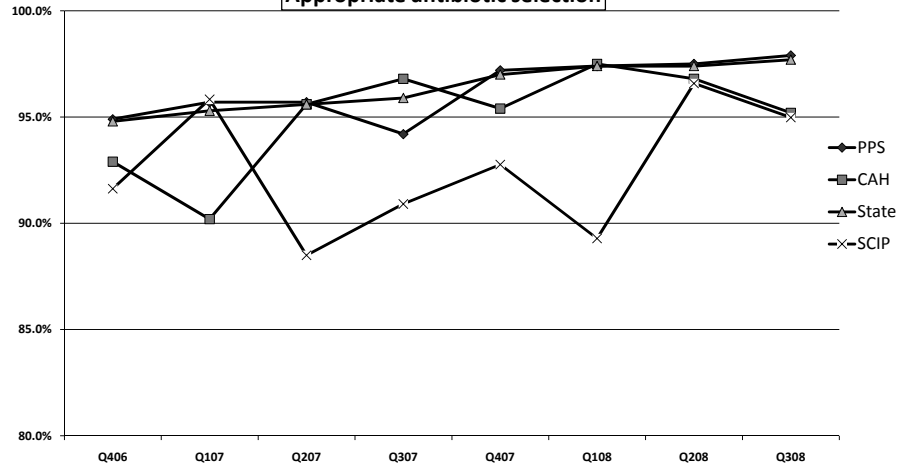
SCIP

SCIP-INF-1
Antibiotic within one hour of surgical incision



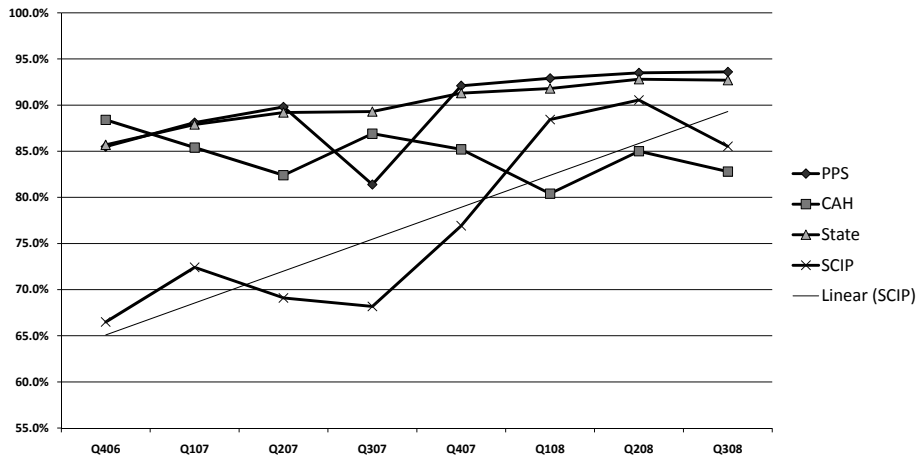
SCIP

SCIP-INF-2
Appropriate antibiotic selection



SCIP

SCIP-INF-3
Antibiotic discontinued within 24 hours after surgery end time



Getting to know today's participants



11

Do we really see?



*“...I did the best I could with what I knew,
and when I knew better, I did it better.”*

Maya Angelou




13

Questions?

Kelly O’Neill, RN

Program Manager

 952-853-8507 or 877-787-2847

koneill@stratishealth.org

www.stratishealth.org



Stratis Health is a nonprofit organization that leads collaboration and innovation in health care quality and safety, and serves as a trusted expert in facilitating improvement for people and communities.

